

# CAFÉ TABLE

Jennifer  
Newman

**Materials:**

Polyester powder-coated aluminium.

**Optional Extras:**

- Non-standard sizes.
- Non-standard colours.
- Bolt-down brackets (fixings not supplied).
- In-frame weighting.

**Warranty:**

5 years provided that products are cleaned and maintained in accordance with our advice and have not been misused.

**Assembly:**

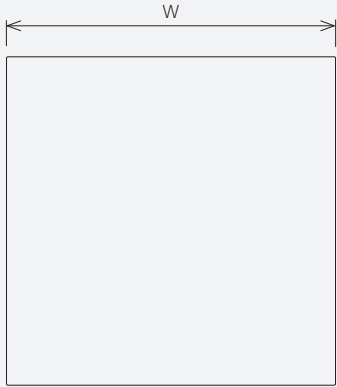
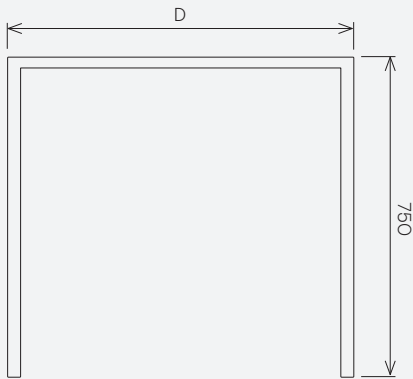
Assembly is not required for this product.  
Check access to ensure this one piece product can be installed without difficulty.  
Please be careful when removing wrapping to avoid sharp implements damaging the surface.



**Dimensions & Weight**

All dimensions in mm.

W	D	H	Seats	kg
600	600	750	2	7
800	800	750	4	9



**Powder-coating standard colours**

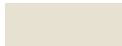
lacquer sealed



**Sable**  
BS 04-B-21



**Oxide Red**  
RAL 3009



**Cream**  
RAL 9001



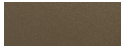
**Agate Grey**  
RAL 7038



**Light Blue**  
BS 18-C-35



**Black**  
RAL 9004



**Bronze**



**Gunmetal**